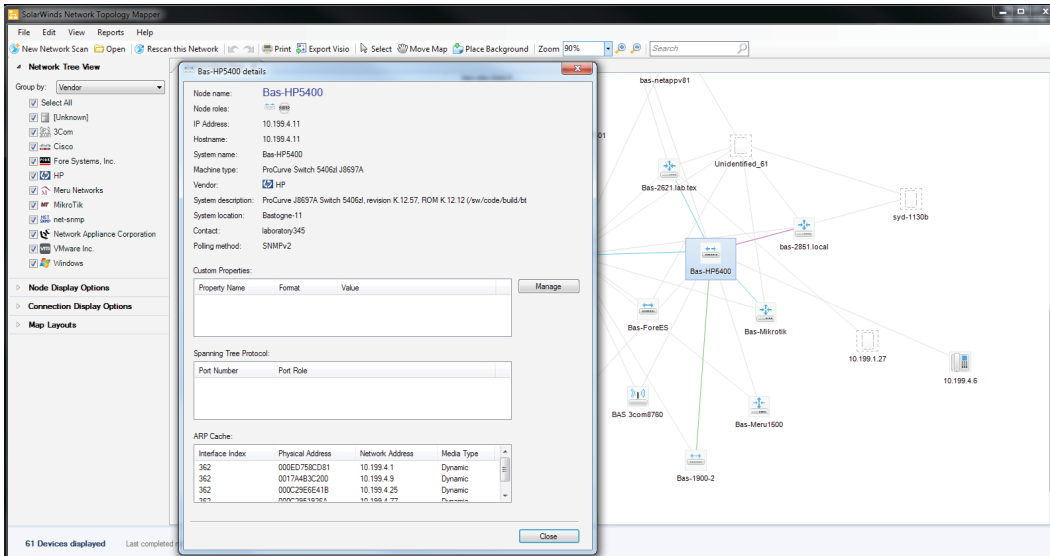


Network Topology Mapper

MAP YOUR NETWORK AUTOMATICALLY IN JUST MINUTES



Download a free product trial and start monitoring your network in minutes.

 **DOWNLOAD FREE TRIAL**
Fully Functional for 30 Days

Finally, you can put down your whiteboard markers and relax while SolarWinds® Network Topology Mapper (NTM) does the network mapping for you. Leveraging a unique multi-level discovery technique, Network Topology Mapper automatically discovers your LAN or WAN and produces comprehensive, easy-to-view network diagrams that integrate OSI Layer 2 and Layer 3 topology data (including switch-to-switch, switch-to-node, and switch-to-router port connections). With two mouse clicks, this data can be exported into Microsoft Office® Visio® and easily shared with your colleagues.

Network Topology Mapper at a Glance

- Automatically discovers and diagrams network topology
- Supports multiple discovery methods including SNMP v1 - v3, ICMP, and WMI
- Exports network maps to Microsoft Office Visio, PDF, and PNG formats
- Delivers reports on switch ports, VLANs, subnets, and inventory
- Addresses reporting needs for PCI compliance and other regulatory requirements

Features

Auto-Discovery & Detailed Map Creation

Network Topology Mapper automatically discovers your entire network and creates comprehensive, detailed network maps in just minutes.

Export Maps to Common Formats

Network Topology Mapper exports network maps to Microsoft Office Visio, Orion Network Atlas, PDF, and PNG formats.

Network Regulatory Compliance

Network Topology Mapper allows you to directly address PCI compliance and other regulations that require maintenance of an up-to-date network diagram.

Multi-Level Network Discovery

Network Topology Mapper performs multi-level discovery to produce an integrated OSI Layer 2 and Layer 3 network map that includes detailed device information.

Auto-Detect Changes to Network Topology

Network Topology Mapper automatically detects new devices and changes to network topology with scheduled network scanning.

Manage Network Inventory

Network Topology Mapper lets you perform inventory management of hardware assets and automate report creation.

Generate Inventory and Network Reports

Network Topology Mapper's robust reporting tools help you keep track of inventory and network information..

System Requirements

HARDWARE	MINIMUM REQUIREMENTS
CPU	2Ghz processor
Memory	1GB RAM
Hard Drive	5GB free disk space is recommended
SOFTWARE	MINIMUM REQUIREMENTS
OS	Windows XP — Windows 8 desktop OS and Windows Server 2003-2012
.Net Framework	3.5 or later

Try Before You Buy. Download a Free Trial!

At SolarWinds, we believe you should try our network topology mapping software before you buy. That's why we offer free trials that deliver full product functionality. Simply download and install the software. That means no complex service agreements. No professional services. No confusing pricing structures. No set-up charges. Download your free, fully functional trial today!

About SolarWinds

Founded in 1999, SolarWinds delivers powerful and affordable IT management and monitoring software to over 100,000 customers worldwide—from Global 1000 enterprises to small businesses. Named by Forbes as one of the top 10 fastest growing technology companies, SolarWinds is improving the way IT management software is developed, priced, purchased, delivered, and used. Our IT monitoring and management software is built for SysAdmins and network engineers who need powerful, affordable, and easy-to-use solutions that save time and simply get the job done. Evaluating, buying, deploying, and using enterprise software shouldn't be complex. IT management solutions from SolarWinds are easy to try, buy, deploy and use. That's unexpected simplicity.

Learn More

For product information or to purchase SolarWinds products, visit solarwinds.com, call, or email:

Americas

Phone: 866.530.8100

Fax: 512.857.0125

Email: sales@solarwinds.com

EMEA

Phone: +353 21 5002900

Fax: +353 212 380 232

Email: sales@solarwinds.com

APAC

Tel : +65 6593 7600

Fax : +65 6593 7601

Email: sales@solarwinds.com

3711 South MoPac Expressway | Building Two | Austin, Texas 78746

*Download a free product trial
and start monitoring your
network in minutes.*

 **DOWNLOAD FREE TRIAL**

Fully Functional for 30 Days