



What's New Guide

Security Explorer 7.2



© 2010 ScriptLogic Corporation
ALL RIGHTS RESERVED.

ScriptLogic, the ScriptLogic logo and Point, Click, Done! are trademarks and registered trademarks of ScriptLogic Corporation in the United States of America and other countries. All other trademarks and registered trademarks are property of their respective owners.

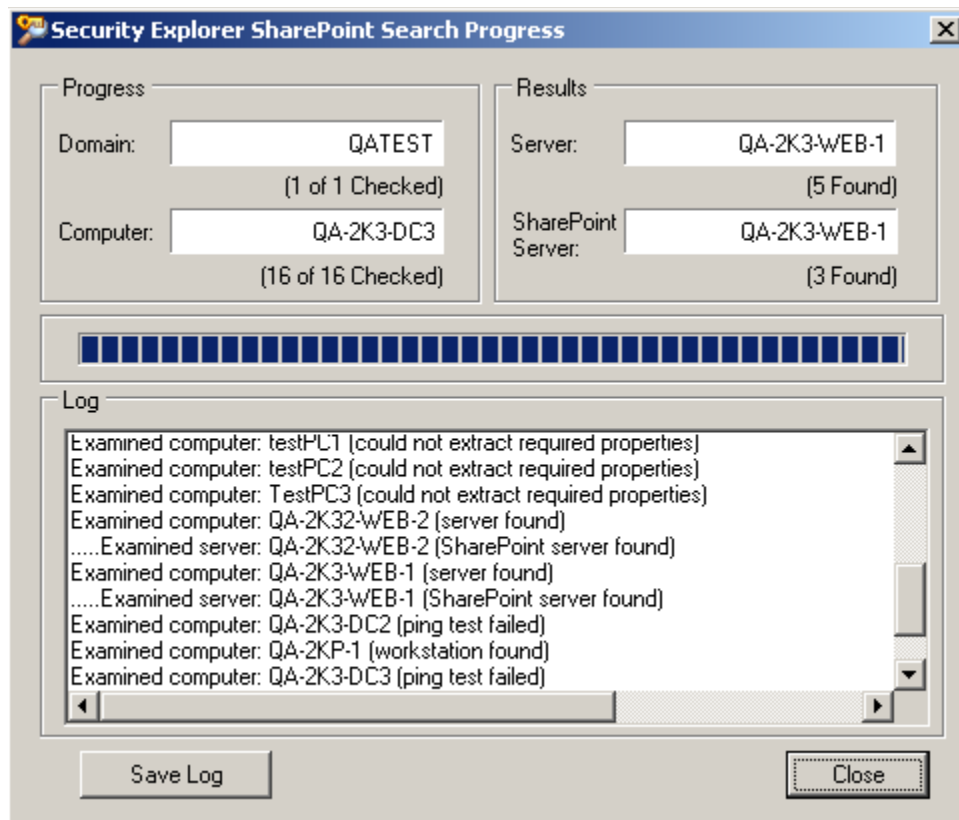
Security Explorer is a powerful, graphical solution for real-time management of access controls and security on files and folders, services, local groups and users, SharePoint, SQL Servers, Exchange and workstations across the enterprise. This broad, real-time solution offers administrators the ability to manage, search, clone, backup, and recover permissions and security across the network.

New Feature Highlights for Version 7.2

NEW! Discover SharePoint servers running on your network

The first step to managing SharePoint security is to make sure all of your SharePoint servers and sites are found and cataloged. Security Explorer now provides the ability to scan all computers on a domain to highlight those that are running SharePoint. These computers are then automatically added to Security Explorer, allowing administrators to easily view and manage the site collections that exist on these servers.

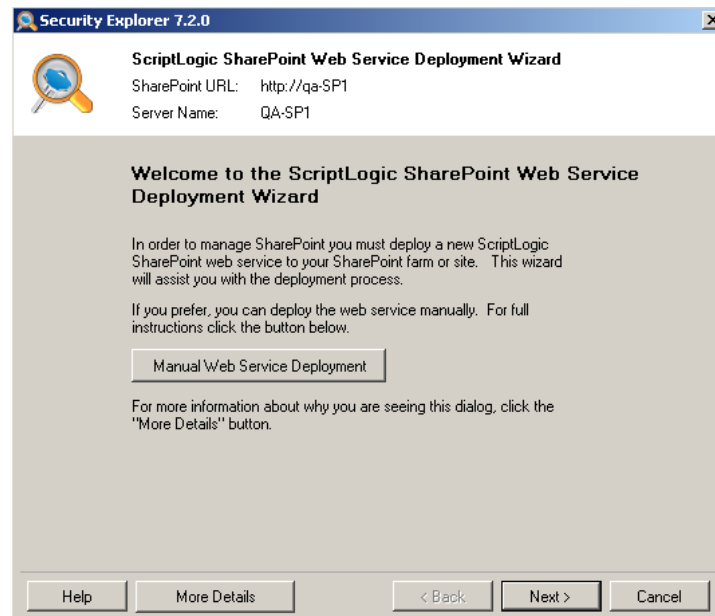
- Scans entire network to find all instances of SharePoint
- Automatically imports SharePoint servers into Security Explorer
- Highlights unknown instances of SharePoint running on the network



NEW! SharePoint Web Service Deployment Wizard

The new SharePoint Web Service Deployment Wizard significantly simplifies the task of deploying the necessary SharePoint management web service to the web front end servers in the farm. In previous versions, the web service had to be deployed individually to each web front end server in order to manage all of the site collections for the farm. With the new deployment wizard, Security Explorer automatically deploys the web service to all the web front end servers in the farm.

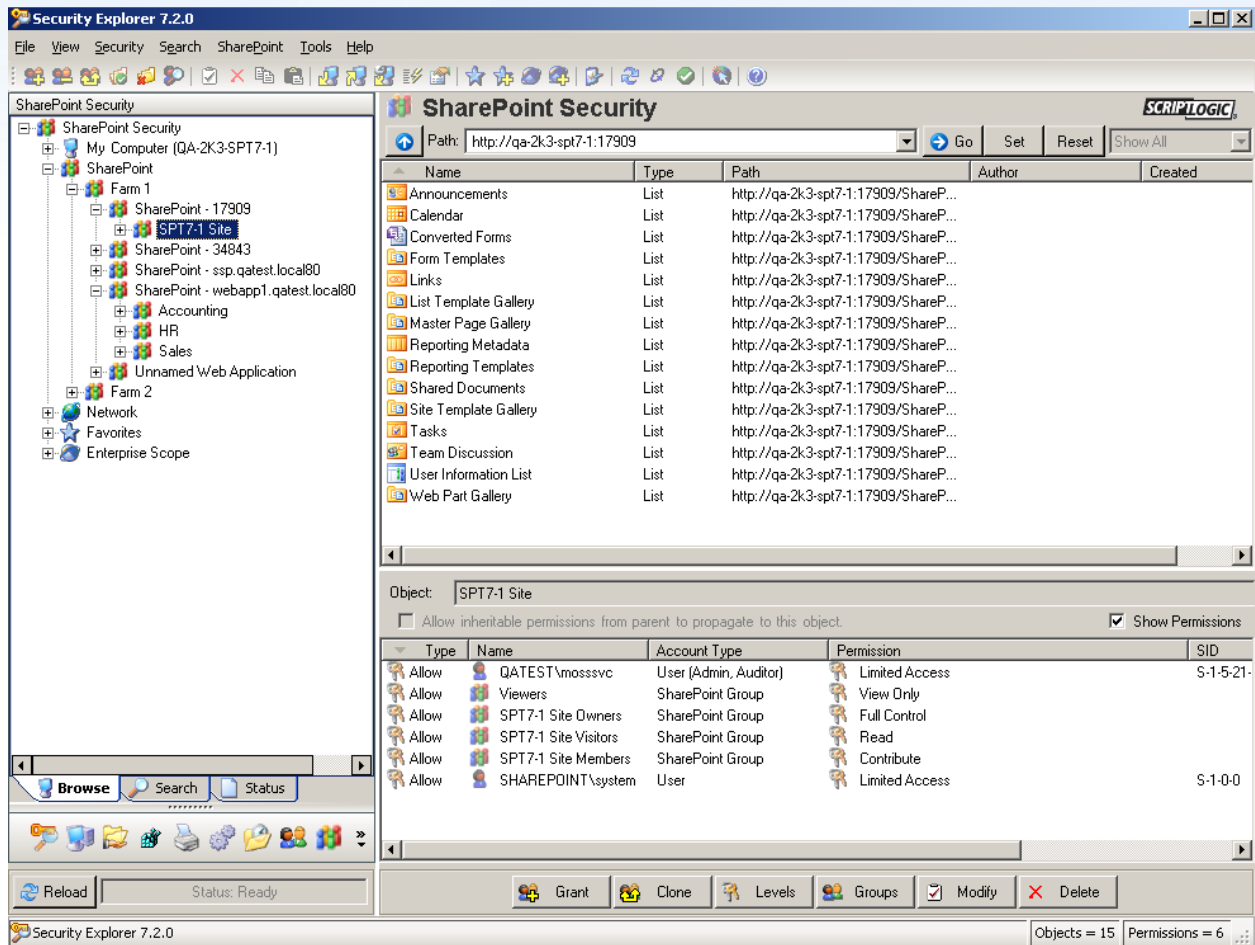
- Eliminates the need to deploy the required web service individually to each web front end server
- Ensures that the web service is up to date across the entire farm
- Simplifies the deployment and ongoing management of the SharePoint web service



ENHANCED! Improved SharePoint Browsing

Security Explorer now provides the ability to manage all SharePoint site collections from one location. Simply add the farm name and specify the URL for any of the site collections that exist on the farm and Security Explorer will display all web applications and site collections in a hierarchical tree view under the farm name. This eliminates the need to browse to the individual web front end servers where the site collections exist when managing SharePoint site collections.

- View all SharePoint site collections in one location – no need to browse through individual web front end servers
- All SharePoint site collections are grouped under their parent web application
- Simplifies the navigation of the SharePoint environment



NEW! Enabled User Licensing

ScriptLogic now offers the ability to license Security Explorer by the number of enabled users in the domain(s) being managed. The enabled user licensing allows for full management of all of the technologies available in Security Explorer on the managed domain(s). Fully manage security on all your file servers and workstations, services and tasks, local groups and users, SharePoint servers, SQL Servers, and Exchange from one console.

Summary

With Security Explorer 7.2, administrators have a powerful, graphical solution for managing access controls and security across the network. Version 7.2 significantly improves the SharePoint management capabilities of Security Explorer by adding the ability to discover SharePoint servers on the network, along with enhancements to the web service deployment and browsing functionality. With the new enabled user licensing in 7.2, Security Explorer centralizes and simplifies the security of Windows-based networks by providing a single interface to manage permissions across the enterprise.

For more information, please visit <http://www.scriptlogic.com/Products/security-explorer/>.