

Security Explorer®

What's New Guide

Security Explorer 8.0

© 2011 ScriptLogic Corporation
ALL RIGHTS RESERVED.

ScriptLogic, the ScriptLogic logo and Point,Click,Done! are trademarks and registered trademarks of ScriptLogic Corporation in the United States of America and other countries. All other trademarks and registered trademarks are property of their respective owners.

Security Explorer provides IT administrators with one platform to completely manage access controls and security across a Windows network environment. The robust functionality of Security Explorer allows IT administrators to manage, backup/recover, search, migrate and report on access controls for Windows Server, Exchange, SharePoint, and SQL Server from a common, easy to use graphical interface. Security Explorer enables IT administrators to meet today's strict regulatory compliance requirements and increase IT department productivity by reducing the number of management products required to maintain a secure environment.

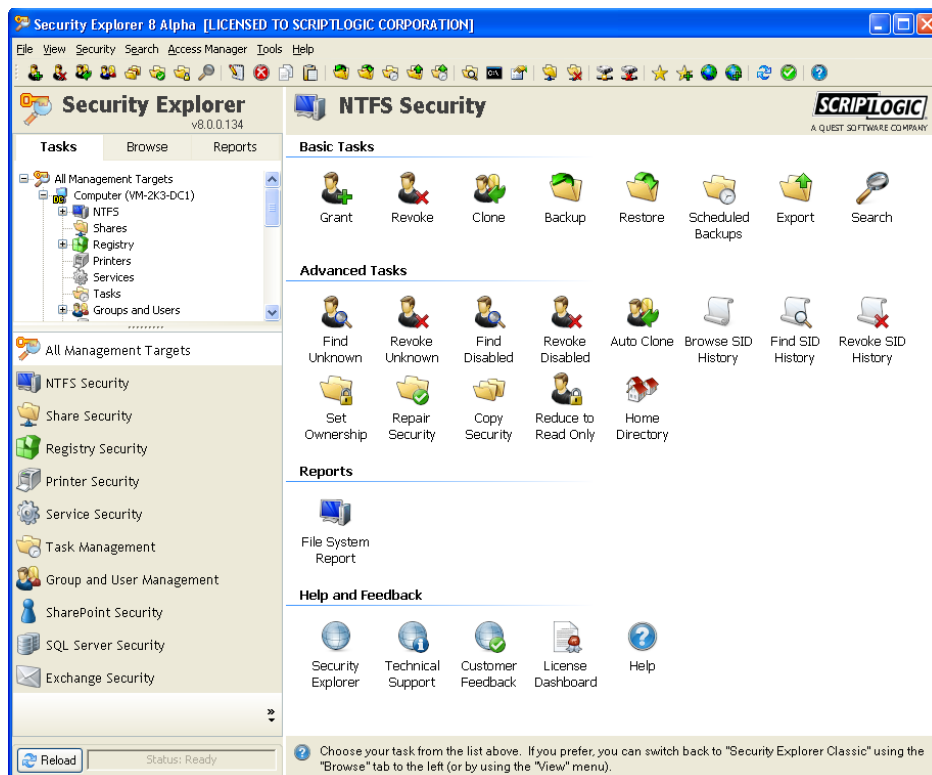
New Feature Highlights for Version 8.0

Summary

Security Explorer 8.0 introduces a number of enhancements that significantly improve the usability of the product.

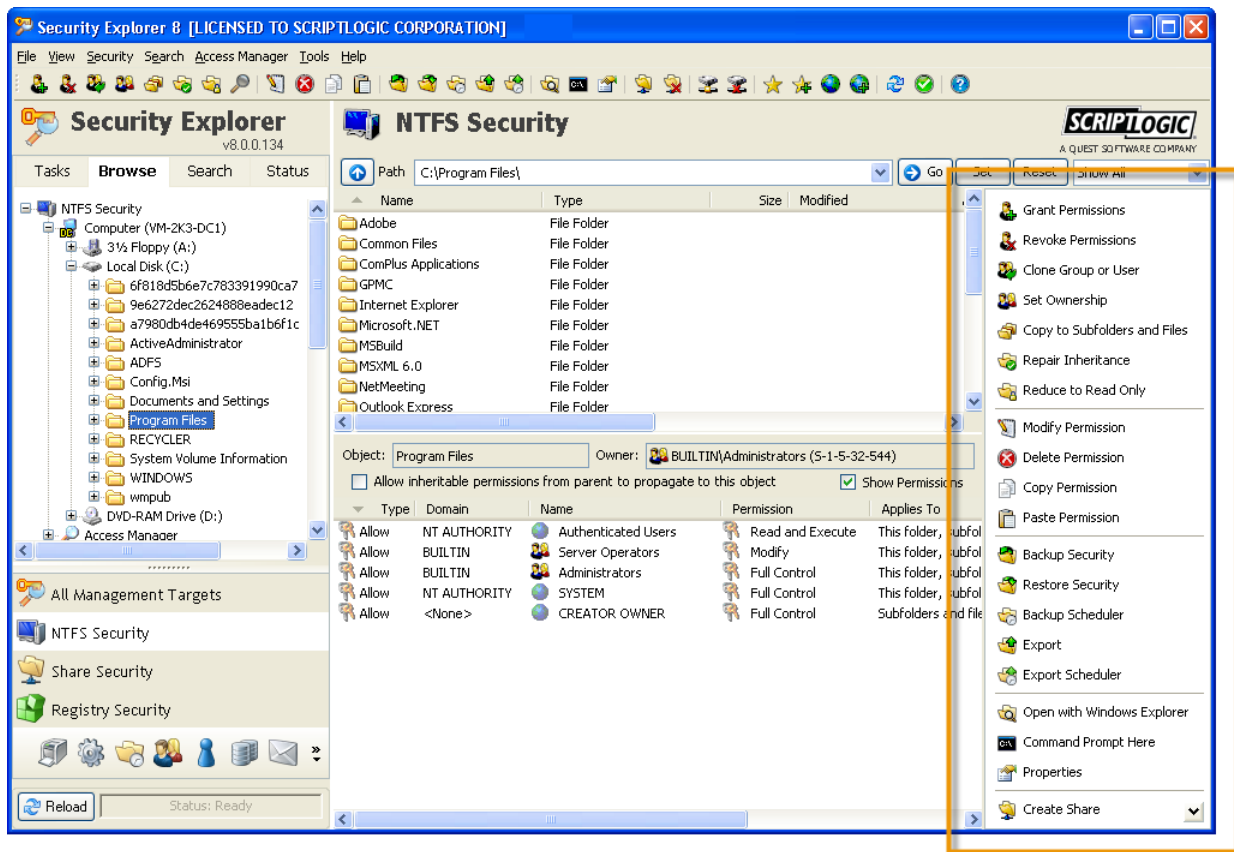
New Tasks View

The new **Tasks** view exposes the numerous Security Explorer features from each of the product modules in a simple wizard-driven task-based view. This new view gives users a task driven workflow when performing permissions related operations making it easy for both new and experienced users to perform basic or advanced permissions management tasks as well as generating permissions reports.



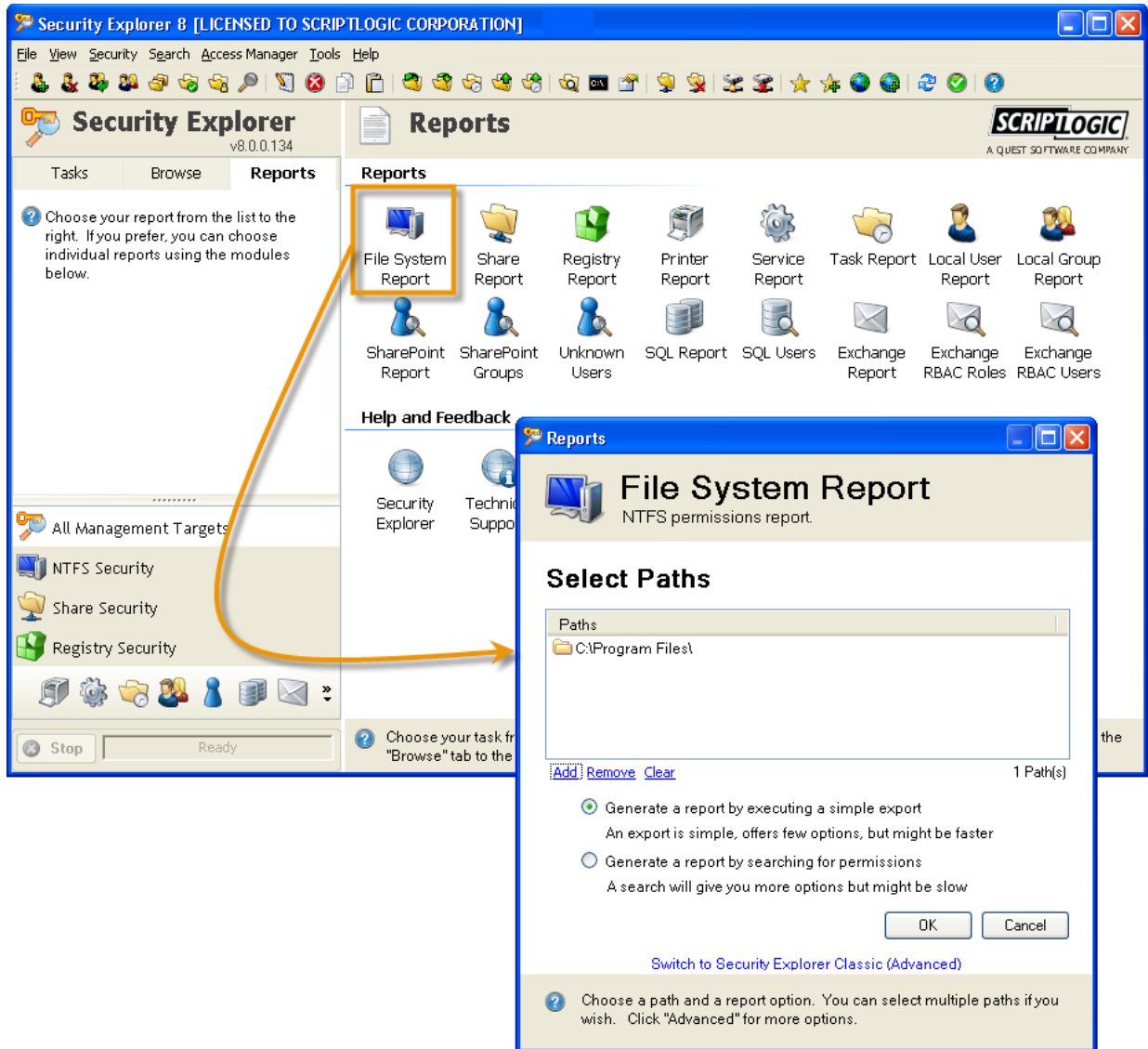
New Control Pane

The classic Security Explorer Browse View which provides an instant view of permission information when browsing the network now includes the new **Control Pane**. The **Control Pane** exposes all of the product actions available for the selected object when browsing resources on the network. The tasks available through the Control Pane are the same as those found on the Task Pane but will automatically run in the context of the selected resource.

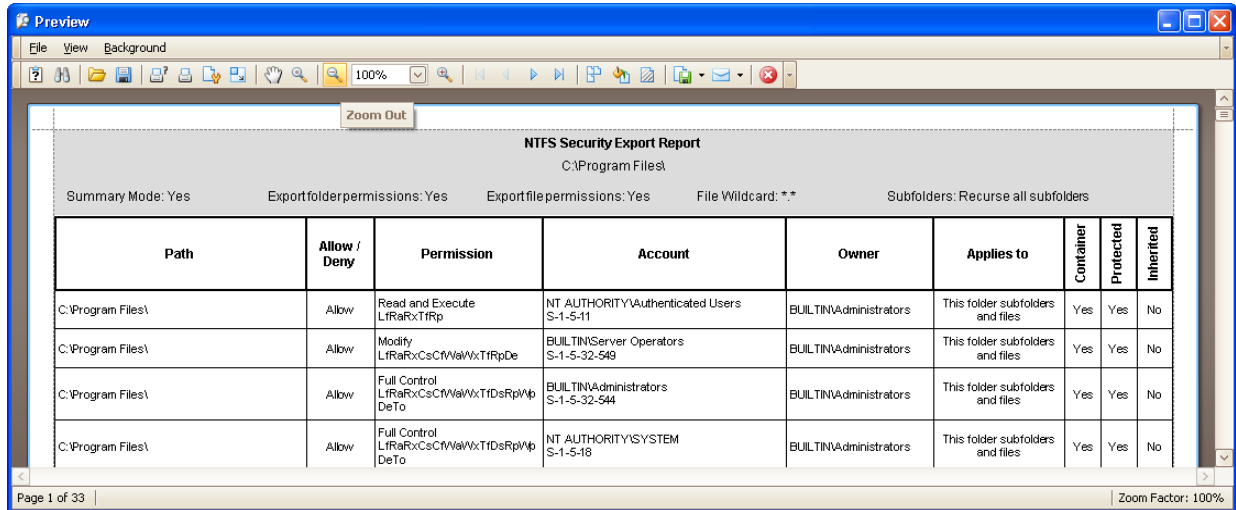


Formatted Reporting

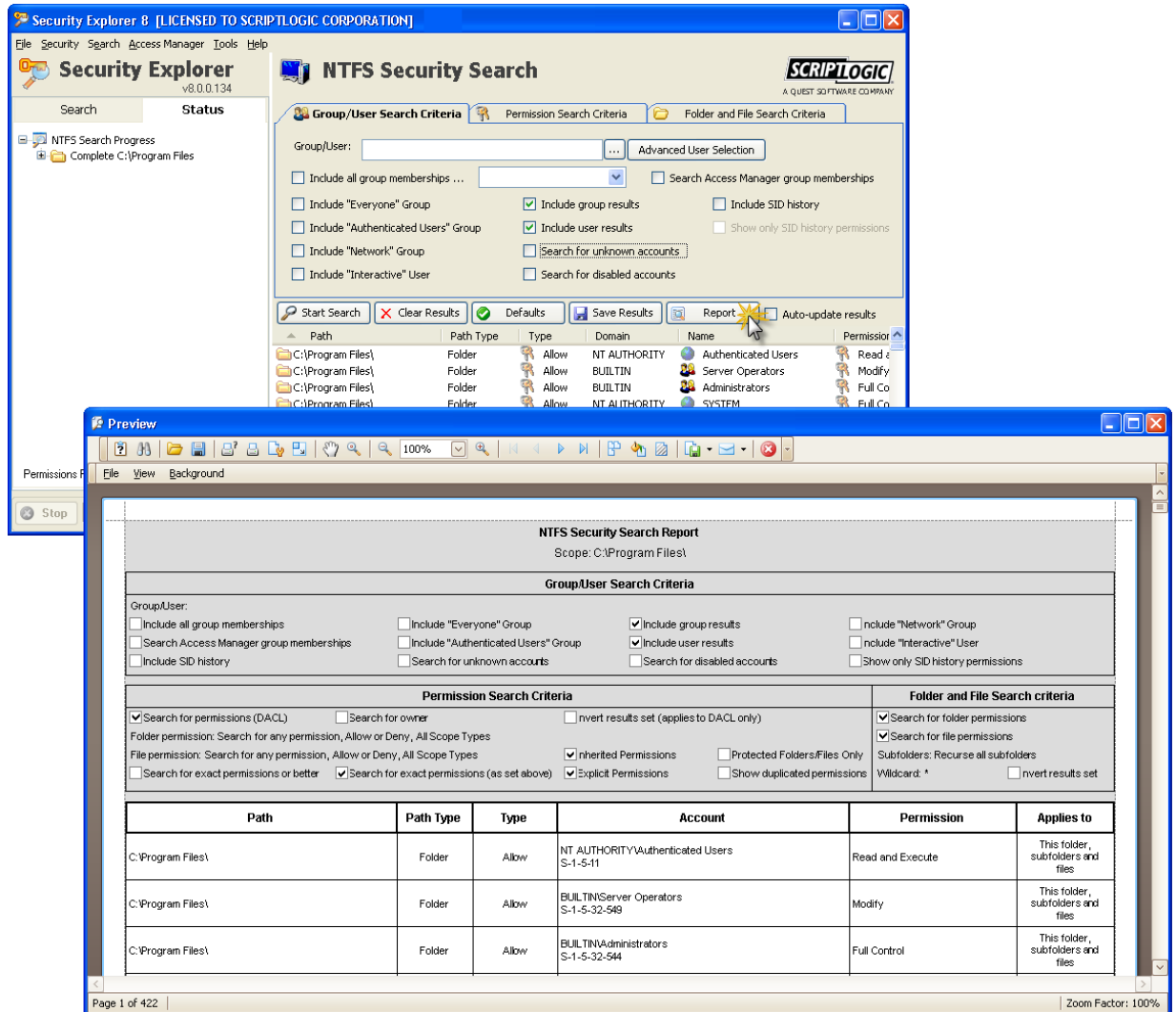
Security Explorer 8.0 adds numerous pre-defined formatted reports that allow users to report on permissions, users and group membership information and other security related details on file servers, SharePoint, SQL Server and Exchange. In most modules, you can choose to create either an export-type report or a search-type report.



Executing a Simple Export



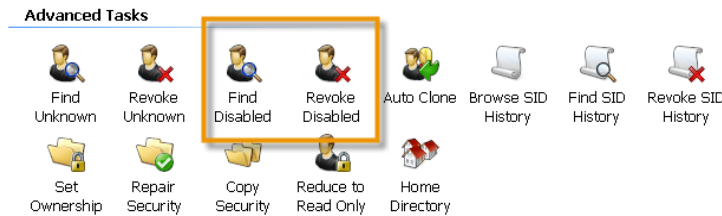
Searching for Permissions



Disabled Account Management

Search for, report on, and manage access granted to **disabled accounts** on file servers, (including NTFS, Shares, Services, and Tasks), SharePoint, SQL Server, and Exchange.

- The **Tasks** tab provides quick access.



- When using the **Browse** tab, you can select to search for disabled accounts, and then easily create a report.

The screenshot shows the Security Explorer 8.0 interface. The 'NTFS Security Search' window is open, and the 'Search for disabled accounts' checkbox is checked. The 'Report' button is highlighted. A 'Preview' window is open, showing the resulting report.

NTFS Security Search Report
Scope: \\WM-2K3-DC1

Group/User Search Criteria

Group/User: [Empty]
 Include all group memberships ...
 Include "Everyone" Group
 Include "Authenticated Users" Group
 Include "Network" Group
 Include "Interactive" User
 Search for disabled accounts

Permission Search Criteria

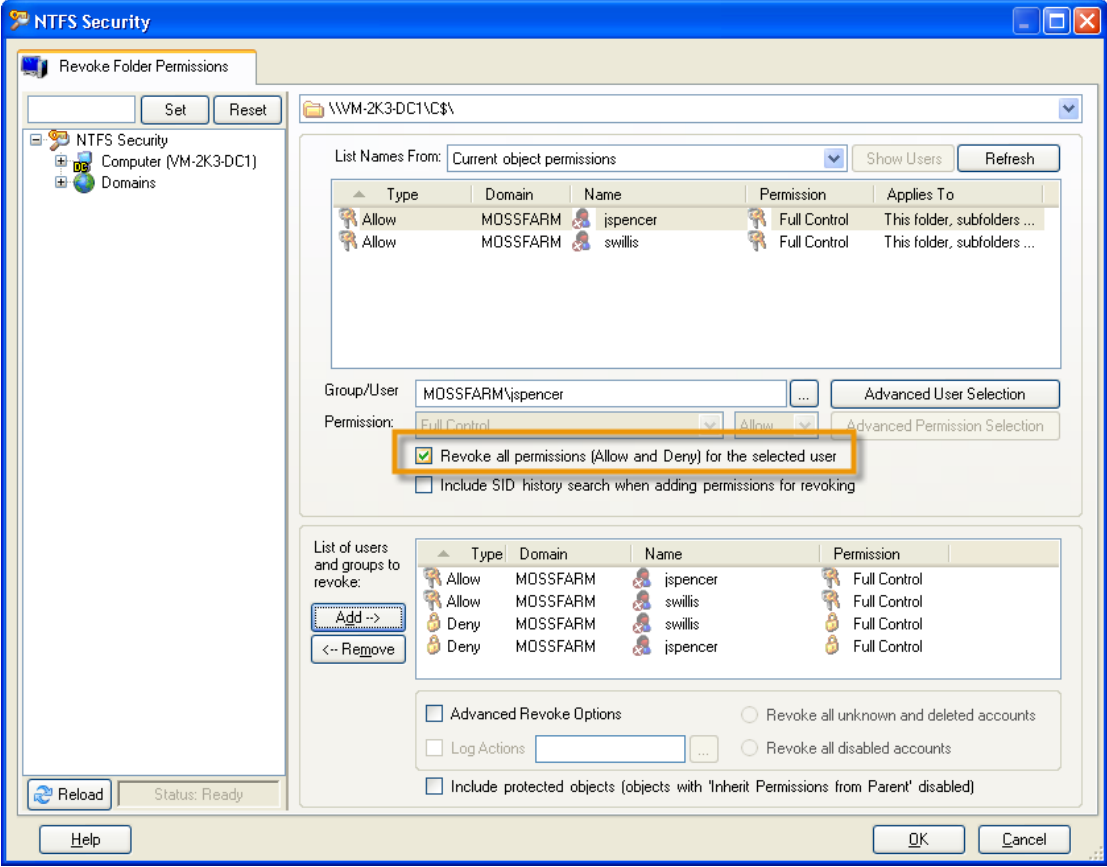
Search for permissions (DACL)
 Search for folder permissions
 Search for file permissions
 Search for exact permissions or better
 Search for exact permissions (as set above)

Folder and File Search Criteria

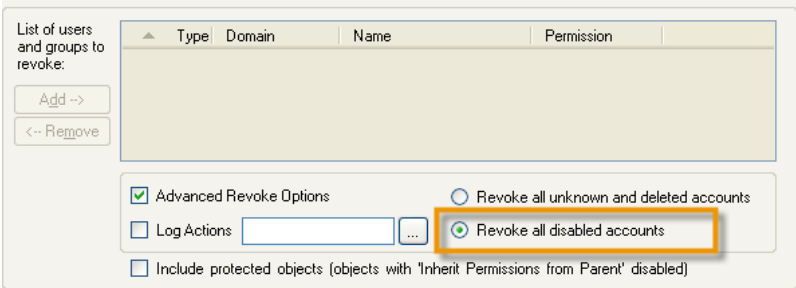
Search for folder permissions
 Search for file permissions
 Subfolders: Recurse all subfolders
 Wildcard: *
 Invert results set

Path	Path Type	Type	Account	Permission	Applies to
\\WM-2K3-DC1\C\$	Folder	Allow	MOSSFARM\jspencer S-1-5-21-2659425245-3644453046-721493414-1138	Full Control	This folder, subfolders and files
\\WM-2K3-DC1\C\$	Folder	Allow	MOSSFARM\swills S-1-5-21-2659425245-3644453046-721493414-1149	Full Control	This folder, subfolders and files
\\WM-2K3-DC1\Y\$\1dbfecc-5020-416f-b6bf-42d7c0bfa3\RegFile.ph	File	Allow ()	MOSSFARM\jspencer S-1-5-21-2659425245-3644453046-721493414-1138	Full Control	This file only
\\WM-2K3-DC1\Y\$\9e5bc143-081b-410d-94f5-d8affe51093d\RegFile.	File	Allow ()	MOSSFARM\jspencer S-1-5-21-2659425245-3644453046-721493414-1138	Full Control	This file only

- When you find disabled accounts, simply right-click the accounts, and then choose **Revoke** from the shortcut menu. The **Revoke** feature opens with the accounts populated and you can easily choose to revoke the selected disabled accounts or revoke all disabled accounts.

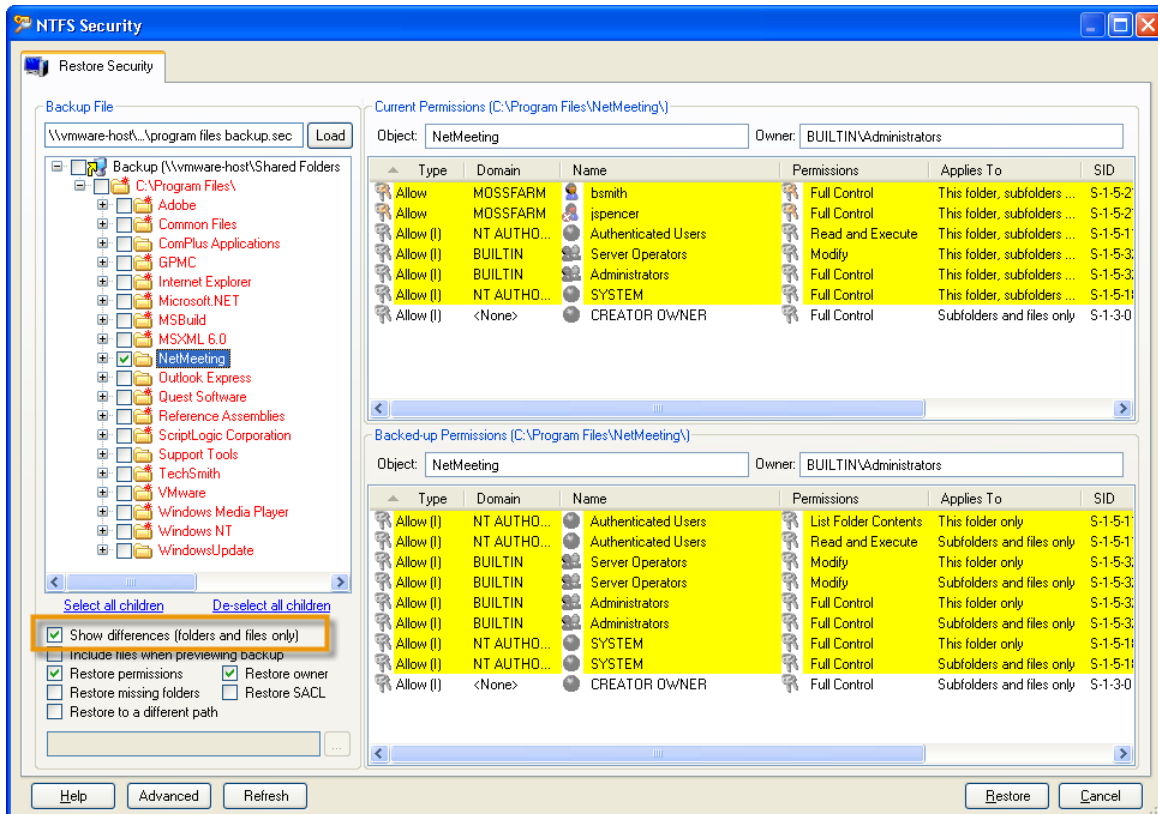


Select **Advanced Revoke Options** to revoke all disabled accounts.



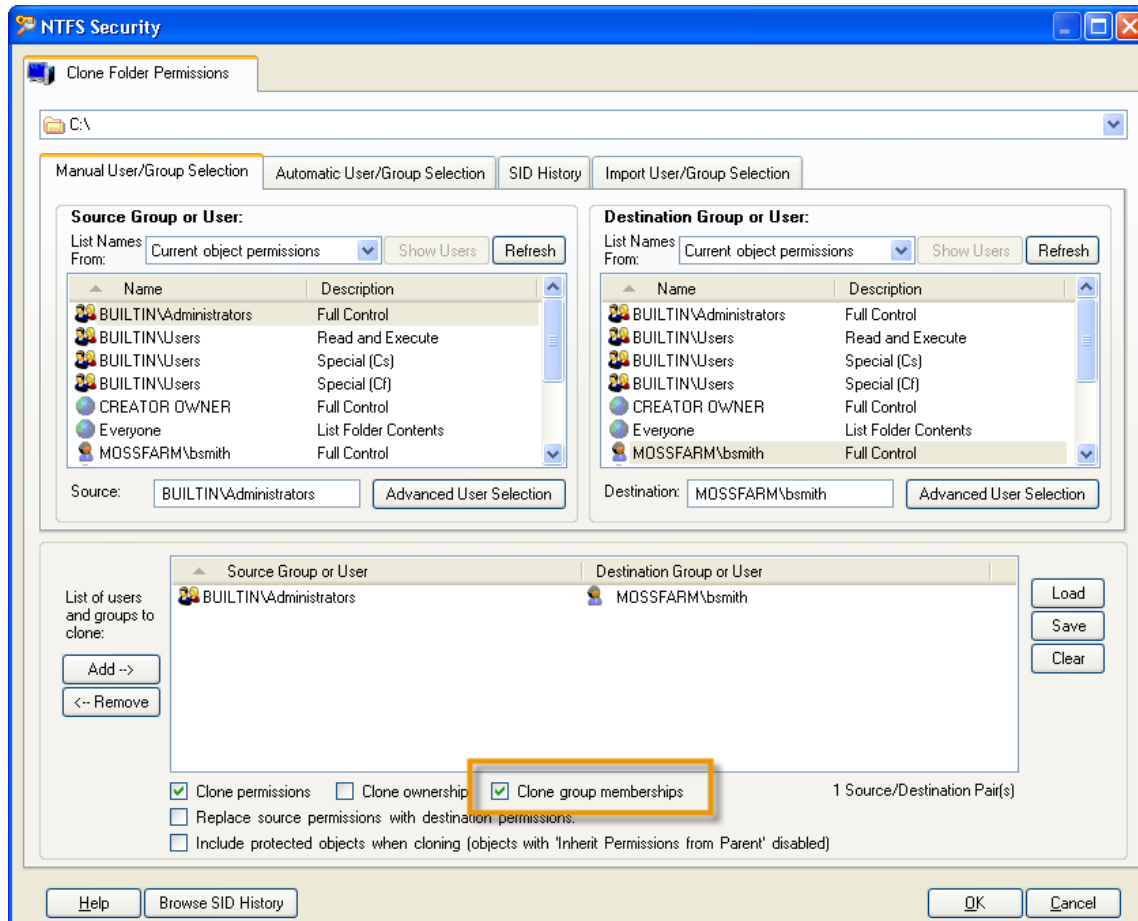
Post-migration Permission Comparison

View backed up permissions in comparison to the live environment when restoring permissions to an alternate location. Permissions are backed up before data is migrated and then compared and optionally restored to the destination location. This feature provides verification that security is consistent when data is migrated from one server to another (*NTFS module only*).



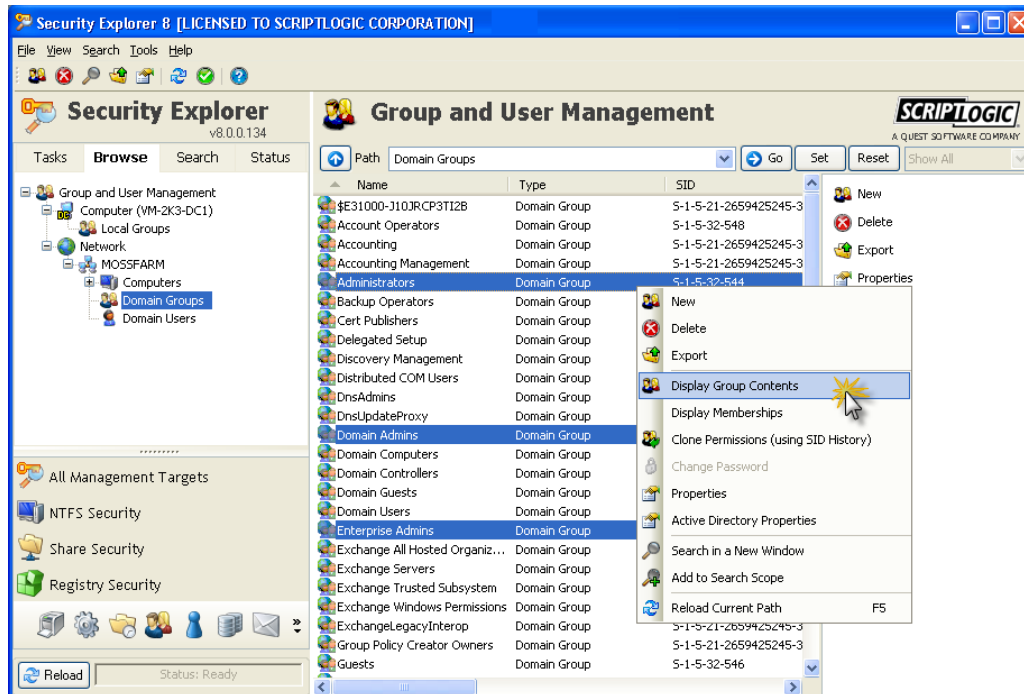
Clone Group Membership Settings Between Accounts

The clone feature in Security Explorer allows users to duplicate access control settings from one account to another when setting up a new user's access. In Version 8.0, this feature has been expanded to optionally clone the user's group membership settings in addition to the directly assigned permissions. This ensures the same level of access is granted to the new user whether the access was granted directly to the user, or indirectly through group membership settings. This feature applies to the NTFS, Share, SharePoint, SQL Server, and Exchange modules.

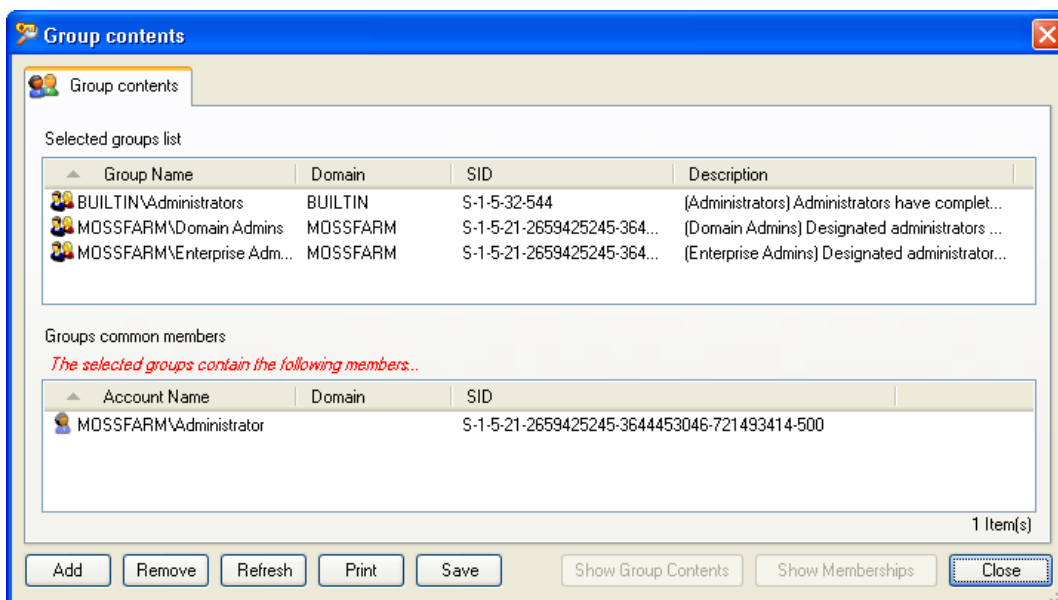


Bulk Group Membership Changes

Security Explorer provides the ability to centrally view and manage local group membership settings on servers and workstations across the network. Search for and then select the accounts you want to manage.



Display Group Contents to view the members for the selected groups that are common for these groups. You can add or remove members to all the groups selected.

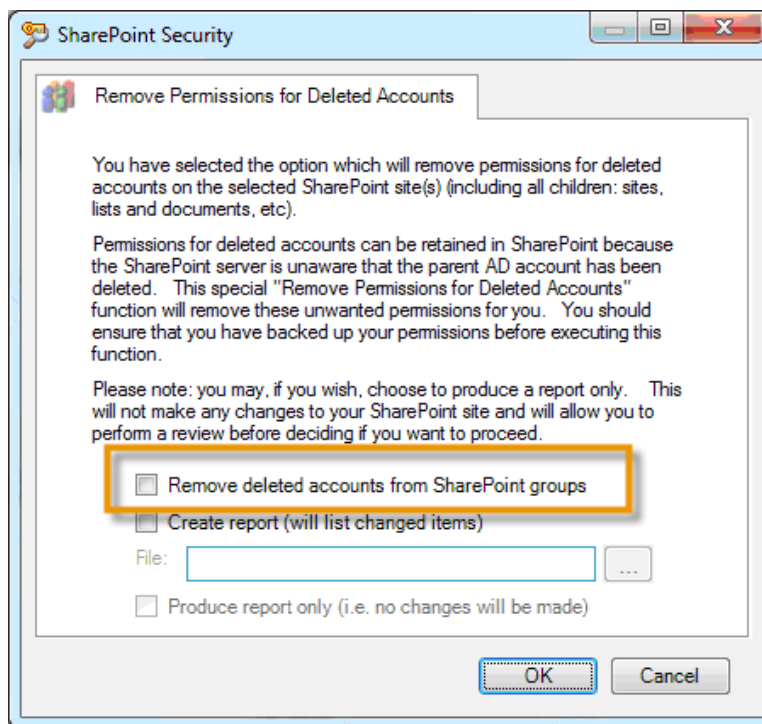


Expanded PowerShell functionality

Twenty new PowerShell cmdlets have been created to allow for permissions management on NTFS, Shares, SharePoint, SQL Server, and Exchange. The PowerShell cmdlets provide the capability to Grant, Revoke, Clone, Backup, and Export permissions.

Deleted Account Cleanup in SharePoint

When an account is deleted from Active Directory, that account does not automatically get removed from SharePoint or SharePoint groups. Security Explorer now provides the capability to search and remove all access in SharePoint to deleted AD accounts and remove those accounts from all SharePoint groups.

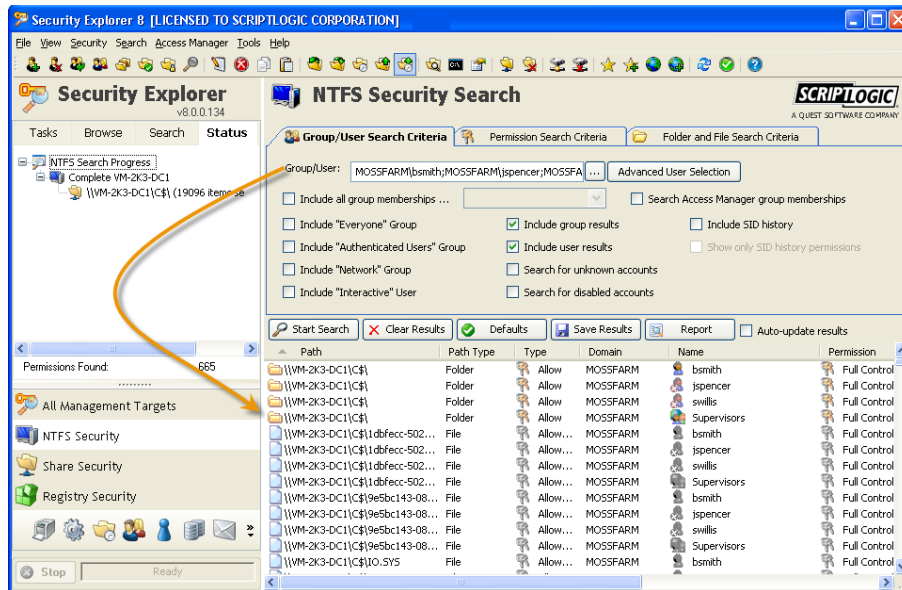


Various Exchange Management Enhancements

- Grant permissions to manage group contents
- Mail enable/disable public folders
- Create new distribution group from existing AD group
- View and configure external contacts
- Various RBAC enhancements for Exchange 2010
- Manage permissions for multiple mailbox folders in one operation

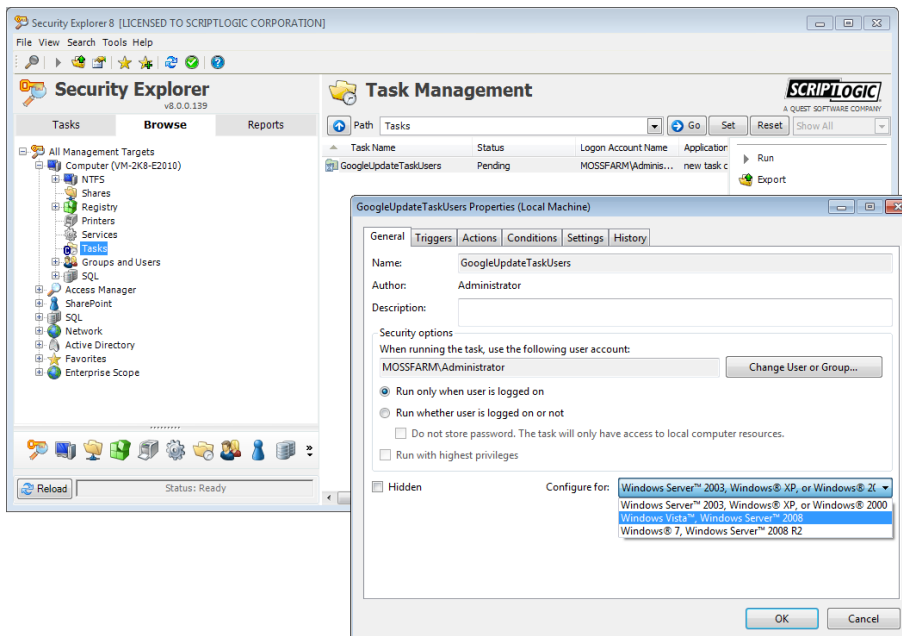
Multiple Account Searching

Security Explorer provides the capability to search across multiple servers to highlight account access (both directly assigned and indirectly assigned through group membership). Version 8.0 adds the ability to search for permissions assigned to multiple accounts at one time.



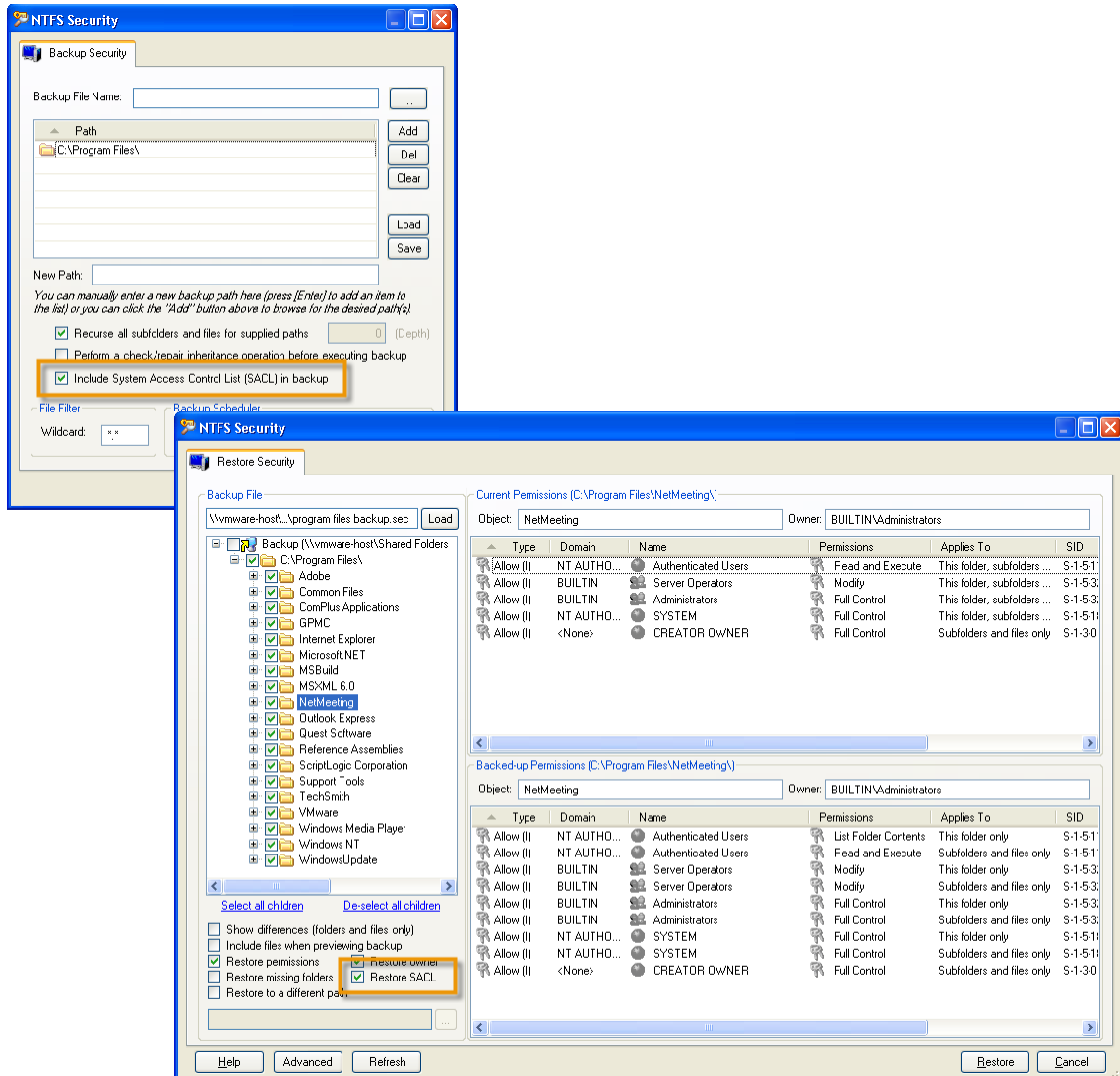
Support for Managing Vista/Windows 2008 style tasks

In the Tasks Management module, support is expanded to include Windows Vista and Windows Server 2008.



Back Up SACL on Files and Folders

Security Explorer 8.0 now provides the ability to backup and restore file and folder audit settings (known as the System Access Control List or SACL).



Other New Features

- Additional logging provided to audit who made a security change along with recording the security changes made to the system (combined with the ability to backup permissions before a change is made, this feature can be tied in with a change management system to provide full audit details along with a rollback plan - NTFS module only)
- Share application configuration settings between different users (saved searches, scheduled backups, scheduled exports, favorites, enterprise scopes, etc.)
- Option to "Force down tree" for inheritance changes (resets all permissions on an NTFS folder structure to inherit from the parent folder)

For more information, please visit <http://www.scriptlogic.com/products/security-explorer/>