

## Enterprise Wide Analytics Platform

Take a trip around the Sawmill 'world' to understand Sawmill's contribution in every area of your business. Sawmill puts readable and actionable up-to-the-minute data in your hands, empowering your business knowledge. You can host Sawmill wherever is most convenient for you: on a PC or a company server. Its agent-less architecture making deployment easy, while its optional page tagging server (Sawmill CCS) makes self-managed page tagging a risk reduced activity by putting you in control of your own data.

## Database Powered

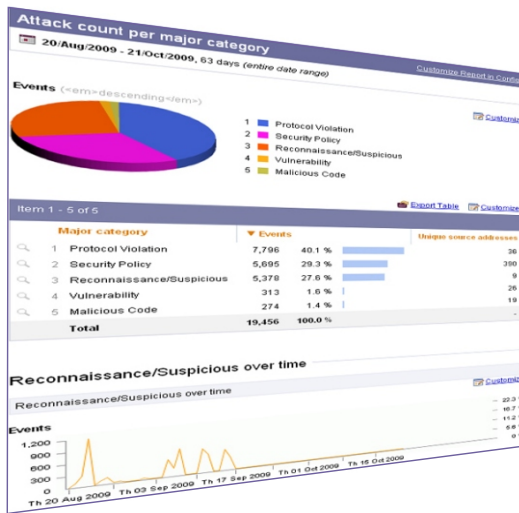
Every version of Sawmill uses a database to generate its uniquely live and drillable reports. The database choice is yours: Sawmill's integrated database, or an external industry standard database such as Oracle, SQL-Server or MySQL

## Live Reporting

Static HTML reports are available if you want them, but live data reports refreshed on demand are what you need to manage your operation. Drill into Sawmill's live reports to see the underlying data to help you make better decisions, with web viewing or emailing of reports



© 2009 SAWMILL ANALYTICS



## Customization

Customize and personalize your copy of Sawmill to match your company style. Change the look and feel of the user interface (UI) in all products. Add graphic items (white labels) to the UI of Professional edition and extensively modify the content of the UI in Enterprise edition, making code changes and adding features as you wish

## Multi-Processor / Cluster / HA

With its multi-threading capability Sawmill Enterprise can utilise a multi-processor system or operate in a multi-computer cluster. And with the addition of a load balancer it can be configured in high availability mode. Further details on request.

## support@sawmill.co.uk

Sawmill software is backed by first class technical support worldwide. SAWMILL ANALYTICS offers a full range of support and consultancy services, including: Standard Support, Premium Care support, Plug-ins for special log formats, Profile development for customized reports, plus remote and on-site

## Software Licensing to suit your needs

**End User license** - single perpetual license fee per copy

**Service Provider** - annual subscription fee per copy

## Multi-Platform Support



## Role Based Access

Privilege access management can now be implemented separately for each and every user. Sawmill Enterprise allows you to set up unlimited users and unlimited roles, assigning single or multiple roles to each user

## Real Time Analytics

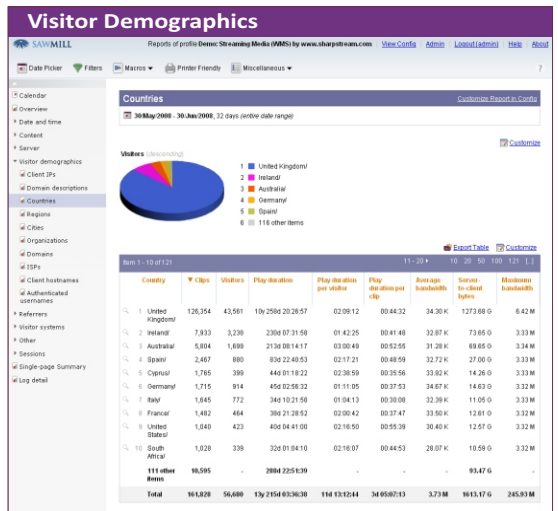
Your business moves fast and you need up to the minute data in business time. In real time mode Sawmill Enterprise will provide you with updated reports with every new line of log data, it can't be any more 'real time' than that. If your business moves fast then you need Sawmill Enterprise

## Client-Side Analytics (Page Tagging)



## Web Visitor Engagement

Monitor website visitor engagement with the add-on Sawmill CCS server. Not just hits and page views but monitor how a visitor interacts with individual items on a page, and how that modifies his behaviour. The Sawmill CCS is a self-managed in-house page tagging server for click-by-click tracking using the latest javascript tagging technology



# Principal Product Features

**Sawmill Enterprise**

- Sawmill DB, MySQL, Oracle, MS SQL-Server
- Profiles: 1,5,10,25,50,100,500,1000 Unlimited
- Role Based Access Control (*unlimited user types*)
- Multi-Processor Support & Cluster Support
- Real Time Reporting & Alerting
- Extensive UI customisation

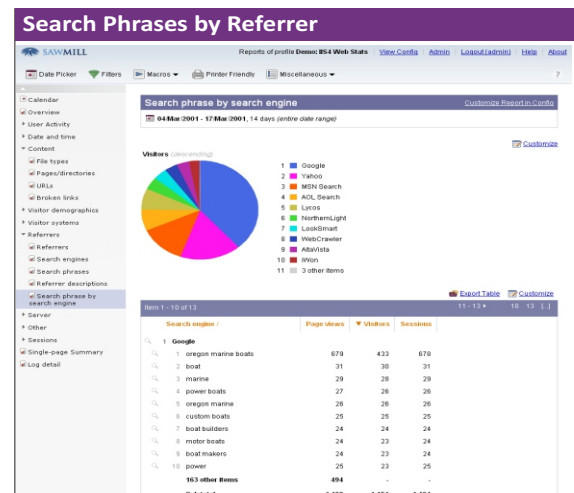
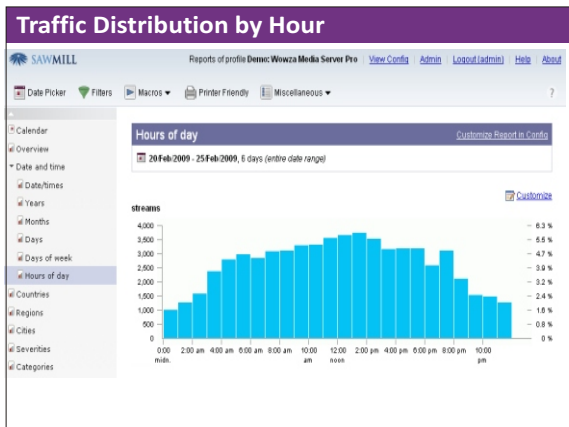
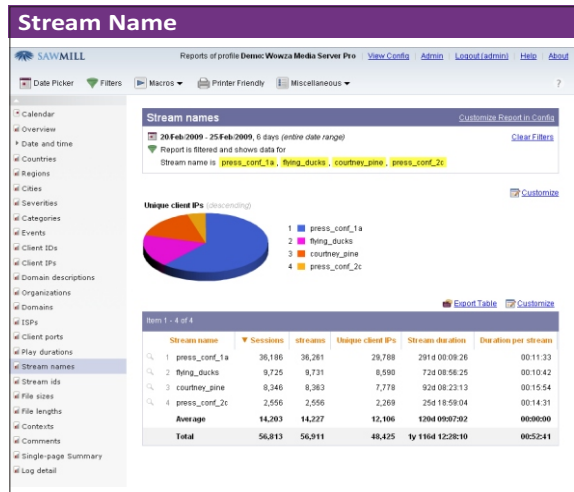
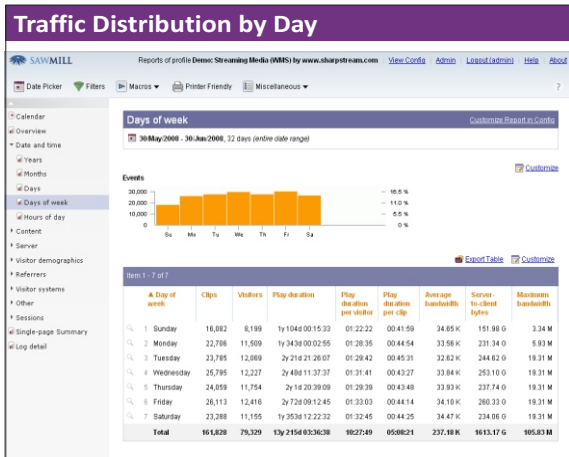
**Sawmill Professional**

- Sawmill internal database
- Profiles: 1,5,10,25,50,100,500,1000 Unlimited
- Fully configurable
- Limited User Access Control (*2 user types*)
- Single Processor support
- Moderate UI customisation

**Sawmill Lite**

- Sawmill internal database
- 1 Profile only
- Minimal configurability
- Limited User Access Control (*2 user types*)
- Single Processor support
- Minimal UI customisation

## Sawmill Report examples (*Sawmill Professional*)



30 day free trial download  
<http://www.sawmill.co.uk/downloads.html>

Sawmill Demonstration  
<http://V8 demo.sawmill.co.uk>

## System Requirements

The examples below are for guidance only. Many factors affect system sizing and performance, not least the pattern of usage and complexity of the log file formats. Use of external SQL databases, load balanced clusters, and HA configurations have not been considered in these guidelines, but are available

### Small Analysis Project

Dedicated PC/ small server | Sawmill Professional | Uncompressed Log File Size ~10GB | Core 2 Duo processor | 2.0+ GHZ clock | 32 bit o/s | 2GB Memory | SATA 300 HDD (7200

### Medium Analysis Project

Dedicated server | Sawmill Professional or Enterprise | Uncompressed Log File Size ~100GB | Single Quad Core | 2.6+ GHZ clock | 64 bit o/s | 2GB Memory/ core (min) |

### Large Analysis Project

Dedicated server/ cluster | Sawmill Enterprise | Uncompressed Log File Size ~1000GB | Multi Quad Core | 3.2+ GHZ clock | 64 bit o/s | 2GB Memory/ core (min) | RAID 10 HDD

'Uncompressed Log File Size' is the aggregated size of the raw log file data. It represents the product of the daily logs and the number of days the log data is to be kept 'live' and available to Sawmill for processing

