

# PRTG NETWORK MONITOR

Installed in Seconds.

Configured in Minutes.

Masters Your Network for Years  
to Come.

# PRTG Network Monitor is ...

## NETWORK MONITORING

Network monitoring continuously collects current status information from your IT network to determine the availability and utilization of devices and to measure bandwidth usage. The IT administrator is informed immediately via email, text message, or other means if delays, malfunctions, or even failures are recorded. Historically collected data gives a long-term overview of the overall health and usage of the network.

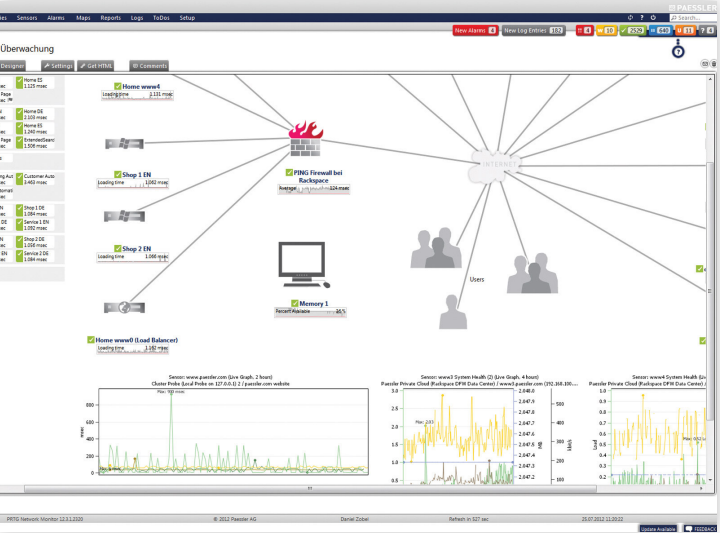
Systematic network monitoring helps prevent outages, optimize networks, and improve services: Save time and money!

... one software solution to monitor your entire network, including devices, applications, traffic, and availability.

PRTG Network Monitor monitors Windows, Linux, Unix, and Mac OS systems. The solution supports SNMP, WMI, Flow monitoring, as well as packet sniffing, and monitoring of IPv6 devices.

It offers more than 150 pre-built sensors specifically designed for QoS monitoring, website monitoring, email monitoring, application monitoring, database monitoring, monitoring of virtual environments, and much more.

Create customized 'PRTG Maps'



Using PRTG's built-in drag & drop maps editor the display of monitoring status, graphs, and tables becomes even more clear.

... a scalable enterprise monitoring solution.

The PRTG Network Monitor Enterprise Console supports viewing data of multiple PRTG installations at a glance: It displays aggregate information for all PRTG installations in one single program, even in huge setup scenarios.

This is ideal for enterprises that need to scale a large number of sensors.

... a highly available monitoring solution.

PRTG Network Monitor comes with a failover cluster in every license (up to five cluster nodes for a Corporate license), which makes sure monitoring will not be interrupted in case of a server failure or while updates are installed.

... a comprehensive network monitoring solution with clear and fair licensing that fits your budget.

PRTG Network Monitor offers comprehensive monitoring functionality and scales up to larger networks of some thousand devices and even more for the price of an entry level monitoring solution. It includes the entire monitoring functionality in every license.

No add-ons are required – no extra costs, no extra configuration and no extra maintenance efforts.

Easy to use web interface



Fast and powerful, optimized for easy and intuitive use. This picture shows the PRTG device tree giving an overview of the entire monitored environment.

... an easy to use monitoring solution for your networks.

PRTG Network Monitor is installed and set-up within minutes and can be updated with new versions in only three clicks thanks to the automated software update. It comes with its own database, an integrated web server, a configuration 'Guru,' and an automatic network discovery.

PRTG is consequently optimized for easy usage.

... enables you to monitor different sites from one central installation.

PRTG Network Monitor comes with 'remote probes' which can be installed on distributed networks and then send the monitoring data SSL-encrypted via Internet (no VPN required) to the core server of the central installation.

... proven in more than 150,000 installations worldwide. Easy, failsafe, and complete control over your network.

'Three click' assistant

PRTG Network Monitor

Home Devices Libraries Sensors Alarms Maps Reports Logs ToDos Setup

Search...

ToDos 36

Add Sensor to Device Probe Device [127.0.0.1] (Step 1 of 2)

Search directly

Monitor What?

- Availability/Uptime
- Bandwidth/Traffic
- Speed/Performance
- CPU Usage
- Disk Usage
- Memory Usage
- Hardware Parameters
- Network Infrastructure
- Custom Sensors

Target System Type?

- Windows
- Linux/MacOS
- Virtualization OS
- File Server
- Email Server
- SQL Server

Technology Used?

- Ping
- SNMP
- WMI
- HTTP
- SSH
- Packet Sniffing
- NetFlow, sFlow, JFlow

Matching Sensor Types - Filter: Virtualization OS - Results: 14

<b>VMware Host Hardware (WBEM)</b> Monitors hardware information of a ESX/ESXi server using WBEM. Add This	<b>Amazon CloudWatch</b> Monitors performance of an Amazon Web Services instance. Add This	<b>Citrix XenServer Virtual Machine</b> Monitors a virtual machine on a Citrix XenServer version 5.0 or later. Add This
<b>Citrix XenServer Host</b> Monitors a Citrix XenServer host version 5.0 or later. Add This	<b>SSH VMWare ESX(i) Disk Sensor</b> Monitors free space on disks of a VMWare ESX(i) system using SSH. Add This	<b>Hyper-V Virtual Machine</b> Monitors a virtual machine on a Hyper-V server. Add This
<b>Hyper-V Host Server</b> Monitors a Hyper-V host server. Add This	<b>Hyper-V Virtual Network Adapter</b> Monitors a Hyper-V Virtual Network Adapter. Add This	<b>Hyper-V Virtual Storage Device</b> Monitors a Hyper-V Virtual Storage Device. Add This

Selecting and adding of new sensors made easy.



The 'sunburst view' shows the status of the whole network on a single screen.

# Technical Data

## Basic Features

- Agentless monitoring of bandwidth, usage, activity, uptime, and SLA monitoring
- Suitable for networks of all sizes
- Automatic network discovery and sensor configuration (IPv4 and IPv6)
- Monitoring of multiple networks/locations with one license
- Failover cluster included in every license, multiple cluster nodes possible
- HTTP-based API for interfacing with other applications

## Sensors and Protocols

- More than 150 sensor types (Ping, HTTP, WMI, SMTP, POP3, DNS, and many others)
- Network traffic and behavior analysis using SNMP, NetFlow v5/v9, sFlow v5, jFlow v5, packet sniffing
- Smart sensors (e.g. automatic cognition of multiprocessor systems)
- Preconfigured device templates for Cisco routers, SQL servers, virtual systems, etc.
- Dedicated hardware sensors for Dell, HP, and APC devices
- Sensors for monitoring virtualized environments (VMware, HyperV, Virtuozzo, XenServer, Amazon CloudWatch, etc.)
- Three-click dialog to add sensors
- Programmable triggers and custom sensors
- Native and agentless Linux and Mac OS monitoring

## Display

- Elegant, fast, and powerful web-based interface
- Geo maps integration via MapQuest, CloudMade, Google, etc.
- Customizable tree view display and individual libraries
- Enterprise Console for viewing multiple PRTG installations at a glance
- iOS App, Android App, and Mobile Web GUI for flexible monitoring
- Hierarchical view (probes, groups, devices, sensors, channels)
- List of sensors (alphabetical, top-10 by speed, by tag, by type, etc.)
- Appealing graphs showing the monitoring data of specified periods from hours up to years
- Customizable 'PRTG Maps' that bring together monitoring status, graphs, and tables, using personalized layouts

## Alerting and Reporting

- Alerts according to individually configured criteria
- Various means of notification (email, SMS, pager message, HTTP request, exe, script, syslog, etc.)
- Periodic and customizable reports (HTML, PDF)
- Detailed log files about all activity and results

## System Requirements and Data Storage

- Data is stored in powerful monitoring data storage system (no SQL server required)
- Small download, easy to install, automatic software update
- Runs on Windows Server 2003, 2008 and 2012, XP, Vista, Windows 7 and Windows 8

## Licensing

- All features included in every license, no add-ons
- Easy upgrade to higher licenses by only paying the price difference



**Free 30 day trial!**

Download at [www.paessler.com/prtg](http://www.paessler.com/prtg)



[info@paessler.com](mailto:info@paessler.com), [www.paessler.com](http://www.paessler.com)

All rights for trademarks and names are property of their respective owners.

PF/20120910/EN



**“... THE COOLEST SOFTWARE  
I HAVE EVER USED!! It does everything!  
So much better than our previous system.”**

Marc Gulatto, Network & IS Administrator,  
Cornerstone Credit Union

**“... a fine tuned, intuitive, powerful  
and meticulously well developed network  
monitoring tool. I now use PRTG to frequently  
get a quick, detailed and nice looking bird's  
eye view on the health of my complex  
network of Linux & Windows servers,  
VMware servers, HPC networks and all  
the routers in between.”**

Clayton Hill, Systems Administrator,  
ateamonsite.com



**“... a stunning product. In my past  
life as a CIO, I've used quite a range of  
management and monitoring suites.  
In terms of price, ease of use, and rock  
solid stability, PRTG trumps them all.”**

Paul Hebing, UBR Technology Services

**“... really great (straight, stable, small  
footprint, etc.), exactly what we may expect  
from German quality products.”**

Thad Seth Paul, Sensas SA